

H TIMING PULLEYS

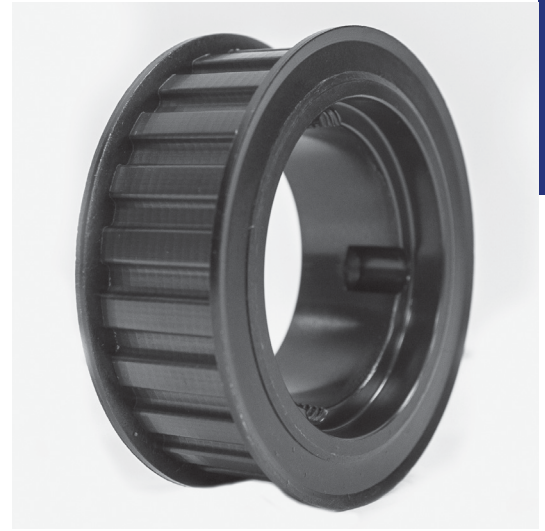
0.500" Trapezoidal Pitch

For 1" Wide Belts

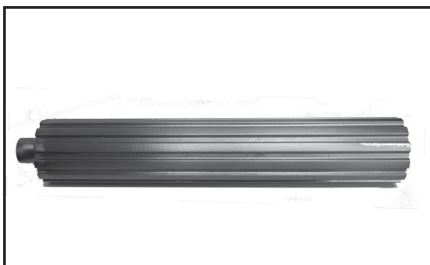
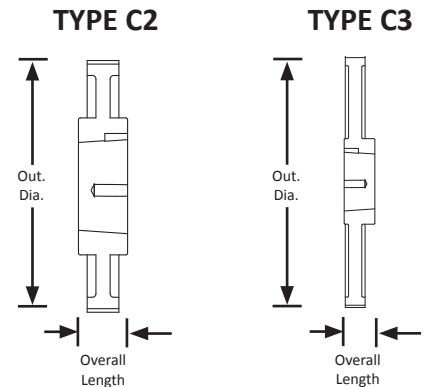
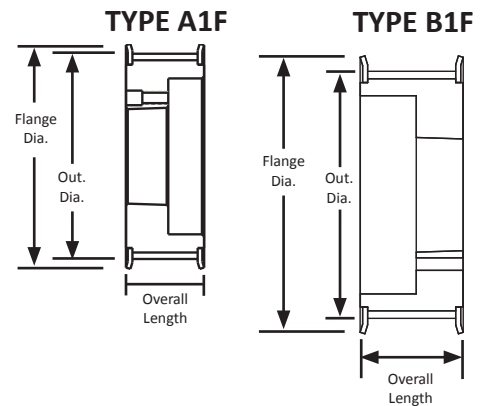
Steel/Iron

Black Oxide Plating

Taper-Lock® Style



Part Number	No. of Teeth	Type	Pitch Dia. (in)	Out. Dia. (in)	Flange Dia. (in)	Bushing	Face Width (in)	Overall Length (in)
TL14H100-1008	14	A1F	2.228	2.174	2.461	1008	1.312	1.312
TL14H100-1108	14	A1F	2.228	2.174	2.461	1108	1.312	1.312
TL16H100-1008	16	A1F	2.546	2.492	2.780	1008	1.312	1.312
TL16H100-1108	16	A1F	2.546	2.492	2.780	1108	1.312	1.312
TL18H100	18	A1F	2.865	2.811	3.100	1210	1.312	1.312
TL20H100	20	A1F	3.183	3.129	3.256	1210	1.312	1.312
TL22H100	22	A1F	3.501	3.447	3.735	1610	1.312	1.312
TL24H100	24	A1F	3.820	3.766	4.050	1610	1.312	1.312
TL26H100	26	A1F	4.138	4.084	4.369	2012	1.312	1.312
TL28H100	28	A1F	4.456	4.402	4.687	2012	1.312	1.312
TL30H100	30	A1F	4.775	4.721	5.000	2012	1.312	1.312
TL32H100	32	B1F	5.093	5.039	5.320	2517	3.375	3.375
TL40H100	40	B1F	6.366	6.312	6.600	2517	2.344	2.344
TL48H100	48	B1F	7.639	7.585	7.867	2517	1.812	1.812
TL60H100	60	C2	9.549	9.495	-	3020	1.312	2.000
TL72H100	72	C2	11.459	11.405	-	3020	1.312	1.312
TL84H100	84	C3	13.369	13.315	-	3020	1.312	1.312
TL96H100	96	C3	15.279	15.225	-	3020	1.312	1.312
TL120H100	120	C3	19.099	19.045	-	3020	1.312	1.312



For H pitch pulley stock and flanges, see page 199.



For matching Taper-Lock® bushings, see page 373.



For Powerhouse™ ACHE sprockets, see page 174.